



ENPROTRADE SDN BHD

Gets You Flow

CHARLOTTE
PIPE AND FOUNDRY COMPANY®

PVC SCH 80
CATALOGUE

ENPROTRADE SDN BHD

Address: No 2, Jalan MJ 13, Taman Perindustrian Meranti Jaya,
47120, Puchong, Selangor Malaysia.

Tel: 03- 8066 6655 Fax: 03- 8066 6677 Email: sales@enprotrade.com.my

Website: www.enprotrade.com.my

PVC Schedule 80 Pipe

P
V
C

S
C
H
E
D
U
L
E

8
0

P
I
P
E

PVC Schedule 80 Pipe, Type 1, Grade 1 - Plain End



PVC SCHEDULE 80 (GRAY)			PLAIN END			PVC 1120	
PART NO.	NOM. SIZE	UPC # 611942-	QTY. PER SKID	AVG. OD (IN.)	MIN. WALL (IN.)	MAX WORK PRESSURE AT 23° C OR 73° F	WT. PER 100 FT. (LBS.)
PVC 10002	1/4"x20'	04920	15140'	0.540	.119	1130 PSI	10.0
PVC 10003	3/8"x20'	04917	9360'	0.675	.126	920 PSI	13.8
PVC 10005	1/2"x20'	03968	6880'	0.840	.147	850 PSI	20.3
PVC 10007	3/4"x20'	03969	4200'	1.050	.154	690 PSI	27.5
PVC 10010	1"x20'	03970	3540'	1.315	.179	630 PSI	40.5
PVC 10012	1 1/4"x20'	03973	4240'	1.660	.191	520 PSI	55.9
PVC 10015	1 1/2"x20'	03976	3440'	1.900	.200	470 PSI	67.7
PVC 10020	2"x20'	03977	1980'	2.375	.218	400 PSI	93.6
PVC 10025	2 1/2"x20'	03978	1360'	2.875	.276	420 PSI	142.8
PVC 10030	3"x20'	03979	960'	3.500	.300	370 PSI	191.1
PVC 10040	4"x20'	03980	1080'	4.500	.337	320 PSI	279.3
PVC 10060	6"x20'	03981	480'	6.625	.432	280 PSI	532.7
PVC 10080	8"x20'	04175	300'	8.625	.500	250 PSI	808.9
PVC 10100	10"x20'	04768	160'	10.750	.593	230 PSI	1199.3
PVC 10120	12"x20'	04770	120'	12.750	.687	230 PSI	1650.1
PVC 10140	14"x20'	04816	60'	14.000	.750	220 PSI	1930.0
PVC 10160	16"x20'	04919	60'	16.000	.843	220 PSI	2544.1

Note: Full pallets are polyethylene wrapped for cleanliness and UV protection.

NSF Listed. Meets All Requirements of ASTM D 1784 and ASTM D 1785.



⚠ WARNING

Testing with or use of compressed air or gas in PVC / ABS / CPVC pipe or fittings can result in explosive failures and cause severe injury or death.

AIR/GAS

- NEVER test with or transport/store compressed air or gas in PVC / ABS / CPVC pipe or fittings.
- NEVER test PVC / ABS / CPVC pipe or fittings with compressed air or gas, or air over water boosters.
- ONLY use PVC / ABS / CPVC pipe for water or approved chemicals.
- Refer to warnings in PPFA User Bulletin 4-80 and ASTM D 1785.

PVC Schedule 80 Pipe

PVC Schedule 80 Pipe, Type 1, Grade 1 - Belled End



PVC SCHEDULE 80 (GRAY)			BELLED-END			PVC 1120	
PART NO.	NOM. SIZE	UPC # 611942-	QTY. PER SKID	AVG. OD (IN.)	MIN. WALL (IN.)	MAX WORK PRESSURE AT 23° C OR 73° F	WT. PER 100 FT. (LBS.)
PVC 10005B	1/2"x20'	04924	6880'	0.840	.147	850 PSI	20.3
PVC 10007B	3/4"x20'	04925	4200'	1.050	.154	690 PSI	27.5
PVC 10010B	1"x20'	04926	3540'	1.315	.179	630 PSI	40.5
PVC 10012B	1 1/4"x20'	04927	4240'	1.660	.191	520 PSI	55.9
PVC 10015B	1 1/2"x20'	04928	3440'	1.900	.200	470 PSI	67.7
PVC 10020B	2"x20'	04764	1980'	2.375	.218	400 PSI	93.6
PVC 10025B	2 1/2"x20'	04875	1360'	2.875	.276	420 PSI	142.8
PVC 10030B	3"x20'	04776	960'	3.500	.300	370 PSI	191.1
PVC 10040B	4"x20'	04774	1080'	4.500	.337	320 PSI	279.3
PVC 10060B	6"x20'	04763	480'	6.625	.432	280 PSI	532.7
PVC 10080B	8"x20'	04766	300'	8.625	.500	250 PSI	808.9
PVC 10100B	10"x20'	04769	160'	10.750	.593	230 PSI	1199.3
PVC 10120B	12"x20'	04771	120'	12.750	.687	230 PSI	1650.1
PVC 10140B	14"x20'	04832	60'	14.000	.750	220 PSI	1930.0
PVC 10160B	16"x20'	09372	60'	16.000	.843	220 PSI	2544.1

Note: Full pallets are polyethylene wrapped for cleanliness and UV protection.

NSF Listed. Meets All Requirements of
ASTM D 1784 and ASTM D 1785.



⚠ WARNING

Testing with or use of compressed air or gas in PVC / ABS / CPVC pipe or fittings can result in explosive failures and cause severe injury or death.

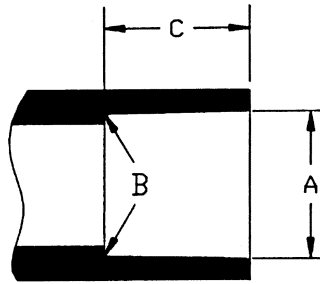
AIR/GAS

- NEVER test with or transport/store compressed air or gas in PVC / ABS / CPVC pipe or fittings.
- NEVER test PVC / ABS / CPVC pipe or fittings with compressed air or gas, or air over water boosters.
- ONLY use PVC / ABS / CPVC pipe for water or approved chemicals.
- Refer to warnings in PPSA User Bulletin 4-80 and ASTM D 1785.

Schedule 80 Fittings

Schedule 80 and Schedule 40 Tapered Socket Dimensions

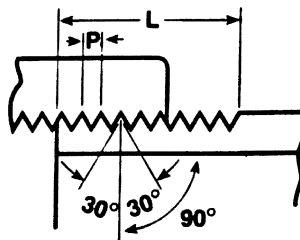
PVC SCHEDULE 80 - ASTM D 2467
 PVC SCHEDULE 40 - ASTM D 2466



Nominal Size	Schedule 80 and Schedule 40 Socket Diameter			Schedule 80 Socket Length C (Minimum)	Schedule 40 Socket Length C (Minimum)
	Entrance A	Bottom B	Tolerance		
1/2	0.848	0.836	±0.004	0.875	0.688
3/4	1.058	1.046	±0.004	1.000	0.719
1	1.325	1.310	±0.005	1.125	0.875
1 1/4	1.670	1.655	±0.005	1.250	0.938
1 1/2	1.912	1.894	±0.006	1.375	1.094
2	2.387	2.369	±0.006	1.500	1.156
2 1/2	2.889	2.868	±0.007	1.750	1.750
3	3.516	3.492	±0.008	1.875	1.875
4	4.518	4.491	±0.009	2.250	2.000
6	6.647	6.614	±0.011	3.000	3.000
8	8.655	8.610	±0.015	4.000	4.000
10	10.780	10.735	±0.015	5.000	5.000
12	12.780	12.735	±0.015	6.000	6.000

American National Standard Taper Pipe Threads (NPT)

ANSI / ASME B1.20.1,
 ASTM D 2464, ASTM F 1498



Nominal Size	Effective Thread Length (L)	Threads Per Inch	Pitch of Thread (P)
1/2	0.5337	14.0	.07143
3/4	0.5457	14.0	.07143
1	0.6828	11.5	.08696
1 1/4	0.7068	11.5	.08696
1 1/2	0.7235	11.5	.08696
2	0.7565	11.5	.08696
2 1/2	1.1375	8.0	.12500
3	1.2000	8.0	.12500
4	1.3000	8.0	.12500

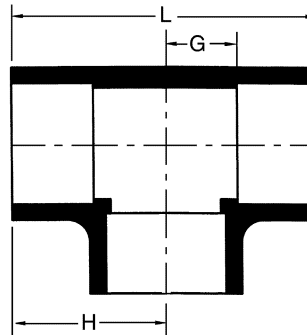
- S = SOCKET, SPG = SPIGOT, MPT = MALE PIPE THREAD, FPT = FEMALE PIPE THREAD
- ALL DIMENSIONS ARE IN INCHES.

TOLERANCES

- S = (SOCKET LENGTH) MINIMUM
 - G = (LAYING LENGTH) INTERSECTION OF CENTER LINES TO BOTTOM OF SOCKET/THREAD, 90° ELBOWS, TEES, CROSSES, $\pm 1/32''$
 - H = INTERSECTION OF CENTER LINES TO FACE OF FITTINGS; 90° ELBOWS, TEES, CROSSES, $\pm 1/32''$
 - J = (LAYING LENGTH) INTERSECTION OF CENTER LINES TO BOTTOM OF SOCKET/THREAD; 45° ELBOWS, $\pm 1/32''$
 - L = OVERALL LENGTH OF FITTINGS, (INCLUDING CAPS), $\pm 1/16''$
 - M = OUTSIDE DIAMETER OF SOCKET/THREAD HUB, $\pm 1/16''$
 - N = SOCKET/THREAD BOTTOM TO SOCKET/THREAD BOTTOM; COUPLINGS, $\pm 1/16''$
- DIMENSIONS ARE SUBJECT TO CHANGE WITHOUT NOTIFICATION.

Tee
SxSxS

PVC PART NO. 8400

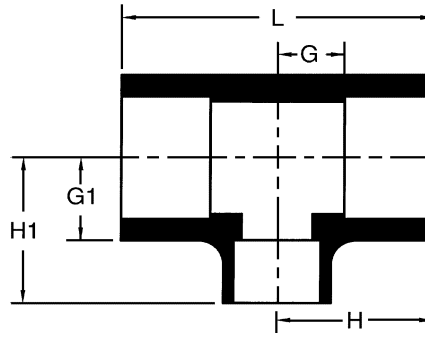


Size	Universal Part Number	L	H	G	Approx Wt. (Lbs.)
1/2	801-005	2 ¹⁵ / ₁₆	1 ¹⁵ / ₃₂	1 ⁹ / ₃₂	0.11
3/4	801-007	3 ⁷ / ₁₆	1 ²³ / ₃₂	1 ¹ / ₁₆	0.17
1	801-010	4	2	2 ⁷ / ₃₂	0.29
1 1/4	801-012	4 ⁹ / ₁₆	2 ⁹ / ₃₂	1	0.42
1 1/2	801-015	4 ⁷ / ₈	2 ⁷ / ₁₆	1 ¹ / ₃₂	0.51
2	801-020	5 ³ / ₄	2 ⁷ / ₈	1 ⁵ / ₁₆	0.84
2 1/2	801-025	6 ¹⁵ / ₁₆	3 ¹⁵ / ₃₂	1 ²¹ / ₃₂	1.49
3	801-030	7 ¹ / ₂	3 ³ / ₄	1 ²⁷ / ₃₂	2.38
4	801-040	9 ³ / ₈	4 ¹¹ / ₁₆	2 ⁷ / ₁₆	3.76
6	801-060	14 ¹ / ₈	7 ¹ / ₁₆	4 ¹ / ₃₂	10.75
8	801-080	17 ¹⁹ / ₃₂	8 ¹³ / ₁₆	4 ³ / ₄	20.13

Reducing Tee

S x S x S

PVC PART NO. 8400



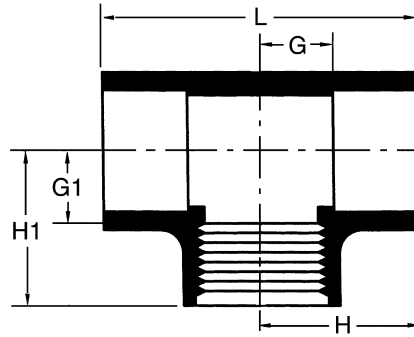
Size	Universal Part Number	L	H	H1	G	G1	Apprx. Wt. (Lbs.)
3/4 x 3/4 x 1/2	801-101	3 ³ / ₁₆	1 ¹⁹ / ₃₂	1 ²¹ / ₃₂	9/16	3/4	0.15
1 x 1 x 1/2	801-130	4 ¹⁵ / ₃₂	1 ³ / ₄	1 ¹⁹ / ₃₂	1 ⁹ / ₃₂	1 ¹ / ₁₆	0.23
1 x 1 x 3/4	801-131	3 ²¹ / ₃₂	1 ¹³ / ₁₆	1 ²⁷ / ₃₂	1 ¹ / ₁₆	2 ⁷ / ₃₂	0.23
1 1/4 x 1 1/4 x 1	801-168	2 1/4	2 1/8	2 1/16	7/8	1 ⁵ / ₁₆	0.36
1 1/2 x 1 1/2 x 3/4	801-210	4 ⁵ / ₃₂	2 ³ / ₃₂	2 1/32	1 ¹ / ₁₆	1	0.36
1 1/2 x 1 1/2 x 1	801-211	4 1/2	2 1/4	2 ⁹ / ₃₂	7/8	1 ⁵ / ₃₂	0.42
1 1/2 x 1 1/2 x 1 1/4	801-212	5 1/8	2 ⁵ / ₈	2 ⁵ / ₁₆	1 ³ / ₁₆	1 ¹ / ₃₂	0.51
2 x 2 x 1/2	801-247	4 ⁵ / ₃₂	2 ³ / ₃₂	2 ⁵ / ₃₂	9/16	1 1/4	0.44
2 x 2 x 3/4	801-248	4 ¹³ / ₃₂	2 ⁷ / ₃₂	2 ⁹ / ₃₂	1 ¹ / ₁₆	1 1/4	0.48
2 x 2 x 1	801-249	4 ³ / ₄	2 ³ / ₈	2 ⁹ / ₁₆	7/8	1 ¹³ / ₃₂	0.60
2 x 2 x 1 1/2	801-251	5 ³ / ₈	2 ¹¹ / ₁₆	2 ¹³ / ₁₆	1 ³ / ₁₆	1 ¹³ / ₃₂	0.73
3 x 3 x 2	801-338	6 ⁵ / ₈	3 ⁵ / ₁₆	3 ¹¹ / ₃₂	1 ⁷ / ₁₆	1 ¹³ / ₁₆	1.62
4 x 4 x 2	801-420	7 ⁹ / ₁₆	3 ²⁵ / ₃₂	4 1/8	1 1/2	2 ¹⁹ / ₃₂	2.77
4 x 4 x 3	801-422	8 ⁵ / ₈	4 ⁵ / ₁₆	4 ⁵ / ₃₂	2 1/16	2 ¹⁹ / ₃₂	3.13
6 x 6 x 2	801-528	9 ¹⁷ / ₃₂	4 ²⁵ / ₃₂	5 1/16	1 ³ / ₄	3 ¹⁷ / ₃₂	6.16
6 x 6 x 4	801-532	11 1/2	5 ³ / ₄	6	2 ²³ / ₃₂	3 ²³ / ₃₂	7.21
8 x 8 x 6	801-585	15 ⁵ / ₈	7 ¹³ / ₁₆	7 1/8	3 ³ / ₄	4 ¹ / ₁₆	15.29

SCHEDULE 80 FITTINGS

Tee

S x S x FPT

PVC PART NO. 8401

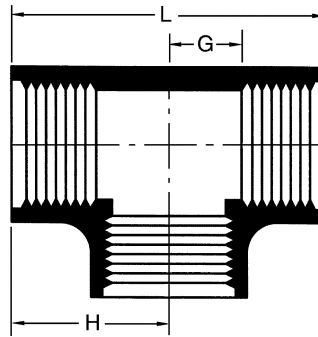


Size	Universal Part Number	L	H	G	H1	G1	Apprx. Wt. (Lbs.)
1/2	802-005	2 ¹³ / ₁₆	1 ¹³ / ₃₂	17/32	1 ¹¹ / ₃₂	19/32	0.15
3/4	802-007	3 ³ / ₁₆	1 ²¹ / ₃₂	21/32	1 ¹⁷ / ₃₂	25/32	0.22
1	802-010	3 ¹¹ / ₁₆	1 ²⁷ / ₃₂	23/32	1 ¹³ / ₁₆	13/16	0.34

Tee

FPT x FPT x FPT

PVC PART NO. 8402

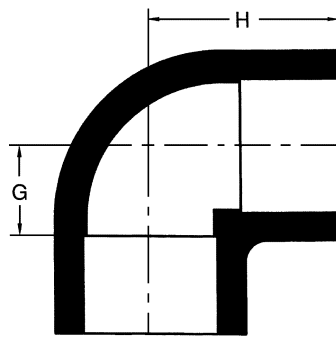


Size	Universal Part Number	L	H	G	Approx. Wt. (Lbs.)
1/2	805-005	2 ⁵ / ₈	1 ⁵ / ₁₆	17/32	0.14
3/4	805-007	2 ¹⁵ / ₁₆	1 ¹⁵ / ₃₂	21/32	0.19
1	805-010	3 ⁷ / ₁₆	1 ²³ / ₃₂	3/4	0.34
1 1/4	805-012	3 ⁷ / ₈	1 ¹⁵ / ₁₆	15/16	0.48
1 1/2	805-015	4 ³ / ₁₆	2 ³ / ₃₂	1 ¹ / ₃₂	0.64
2	805-020	4 ³ / ₄	2 ³ / ₈	15/16	0.90
2 1/2	805-025	6 ¹ / ₄	3 ¹ / ₈	1 ⁹ / ₁₆	1.83
3	805-030	7 ¹ / ₁₆	3 ¹⁷ / ₃₂	1 ²⁹ / ₃₂	2.73
4	805-040	8 ⁷ / ₁₆	4 ⁷ / ₃₂	2 ¹⁵ / ₃₂	4.49

90 Degree Elbow

S x S

PVC PART NO. 8300

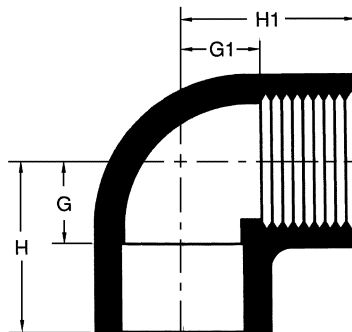


Size	Universal Part Number	H	G	Approx. Wt. (Lbs.)
1/2	806-005	1 ¹⁵ / ₃₂	1 ⁹ / ₃₂	0.08
3/4	806-007	1 ¹¹ / ₁₆	1 ¹ / ₁₆	0.13
1	806-010	2	2 ⁷ / ₃₂	0.19
1 1/4	806-012	2 ⁹ / ₃₂	1	0.32
1 1/2	806-015	2 ⁷ / ₁₆	1 ¹ / ₃₂	0.42
2	806-020	2 ²⁷ / ₃₂	1 ⁵ / ₁₆	0.63
2 1/2	806-025	3 ⁷ / ₁₆	1 ²¹ / ₃₂	1.13
3	806-030	3 ³ / ₄	1 ²⁷ / ₃₂	1.60
4	806-040	4 ¹¹ / ₁₆	2 ⁷ / ₁₆	2.85
6	806-060	6 ¹¹ / ₁₆	3 ¹¹ / ₁₆	8.27
8	806-080	8 ¹⁹ / ₃₂	4 ¹⁹ / ₃₂	15.46

90 Degree Elbow

S x FPT

PVC PART NO. 8301

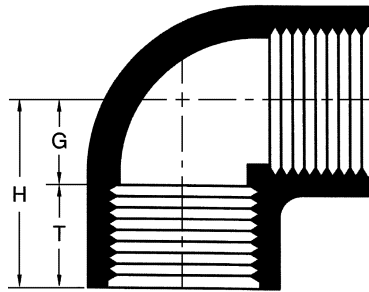


Size	Universal Part Number	H	G	H1	G1	Approx. Wt. (Lbs.)
1/2	807-005	1 ³ / ₈	1/2	1 ¹³ / ₃₂	2 ² / ₃₂	.138
3/4	807-007	1 ²¹ / ₃₂	5/8	1 ⁵ / ₈	1 ³ / ₁₆	.173
1	807-010	1 ²⁷ / ₃₂	2 ³ / ₃₂	1 ²⁵ / ₃₂	2 ⁷ / ₃₂	.265
1 1/4	807-012	2 ¹ / ₄	1 ¹ / ₄	2	1	.434
1 1/2	807-015	2 ³ / ₈	1	2 ¹ / ₈	1 ¹ / ₁₆	.562
2	807-020	2 ³ / ₄	1 ¹ / ₄	2 ⁷ / ₁₆	1 ⁷ / ₁₆	.802

90 Degree Elbow

FPT x FPT

PVC PART NO. 8302

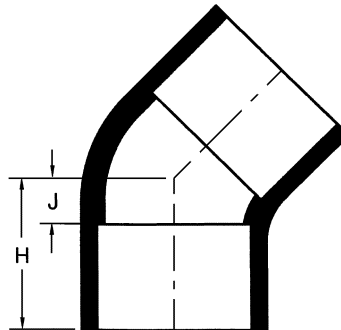


Size	Universal Part Number	T	G	H	Approx. Wt. (Lbs.)
1/2	808-005	3/4	2 1/32	1 13/32	0.11
3/4	808-007	25/32	27/32	1 5/8	0.18
1	808-010	3 1/32	3/4	1 23/32	0.26
1 1/4	808-012	1	3 1/32	1 31/32	0.42
1 1/2	808-015	1 1/16	1 5/32	2 7/32	0.54
2	808-020	1 3/32	1 13/32	2 1/2	0.82
2 1/2	808-025	1 9/16	1 9/16	3 1/8	1.34
3	808-030	1 5/8	1 15/16	3 9/16	2.30
4	808-040	1 11/16	2 1/2	4 3/16	3.62

45 Degree Elbow

S x S

PVC PART NO. 8309

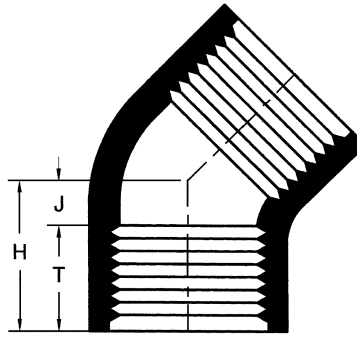


Size	Universal Part Number	H	J	Approx. Wt. (Lbs.)
1/2	817-005	1 5/32	1/4	0.07
3/4	817-007	1 11/32	1 5/16	0.10
1	817-010	1 15/32	5/16	0.16
1 1/4	817-012	1 11/16	1 3/32	0.22
1 1/2	817-015	1 7/8	1/2	0.30
2	817-020	2 5/32	2 1/32	0.48
2 1/2	817-025	2 1/2	2 3/32	0.83
3	817-030	2 11/16	2 5/32	1.16
4	817-040	3 9/16	1 9/32	2.21
6	817-060	5	2	5.50
8	817-080	6 1/4	2 1/4	10.42

45 Degree Elbow

FPT x FPT

PVC PART NO. 8312

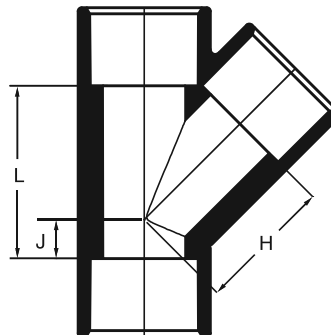


Size	Universal Part Number	H	J	T	Approx. Wt. (Lbs.)
1/2	819-005	1 1/32	9/32	3/4	0.07
3/4	819-007	1 1/8	1 1/32	25/32	0.10
1	819-010	1 11/32	3/8	3 1/32	0.16
1 1/4	819-012	1 7/16	7/16	1	0.23
1 1/2	819-015	1 9/16	1 7/32	1 1/32	0.31
2	819-020	1 3/4	2 3/32	1 1/32	0.46
2 1/2	819-025	2 1/2	1 1/16	1 13/16	1.10
3	819-030	2 3/4	7/8	1 7/8	1.74
4	819-040	3 1/4	1 1/8	2 1/8	3.03

Wye

S x S x S

PVC PART NO. 8600



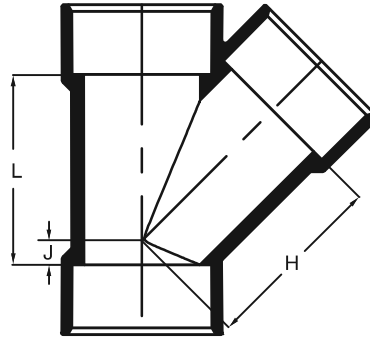
Size	Universal Part Number	L	J	H	Approx. Wt. (Lbs.)
1 1/2*	875-015	3 1/16	1 1/16	2 13/32	0.65
2*	875-020	3 7/8	2 1/32	3 7/32	1.06
3*	875-030	4 15/16	1 1/16	6 9/16	2.51

* Maximum pressure rating is 250 psi at 73°F.

Wye

S x S x S

PVC PART NO. 8600



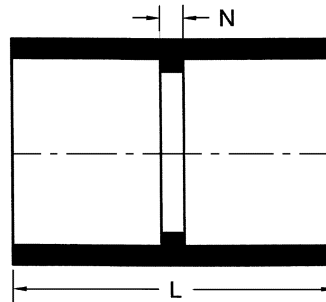
Size	Universal Part Number	L	J	H	Approx. Wt. (Lbs)
4**	875-040	6 ³ / ₁₆	1 ³ / ₁₆	5 ³ / ₈	4.42
6**	875-060	9 ³ / ₈	1 ¹³ / ₃₂	7 ³¹ / ₃₂	11.95

** Maximum pressure rating is 150 psi at 73°F.

Coupling

S x S

PVC PART NO. 8100

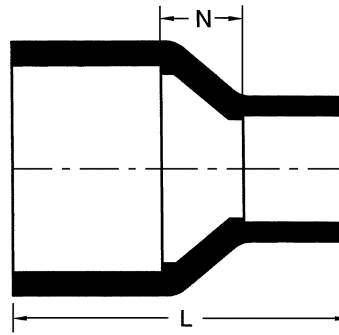


Size	Universal Part Number	L	N	Approx. Wt. (Lbs.)
1/2	829-005	1 ¹⁵ / ₁₆	1/8	0.05
3/4	829-007	2 ³ / ₁₆	1/8	0.08
1	829-010	2 ⁷ / ₁₆	1/8	0.12
1 1/4	829-012	2 ¹¹ / ₁₆	1/8	0.17
1 1/2	829-015	2 ¹⁵ / ₁₆	1/8	0.23
2	829-020	3 ³ / ₁₆	1/8	0.33
2 1/2	829-025	3 ³ / ₄	3/16	0.57
3	829-030	4	3/16	0.84
4	829-040	4 ³ / ₄	3/16	1.35
6	829-060	6 ⁹ / ₃₂	1/4	3.46
8	829-080	8 ¹ / ₄	1/4	6.61

Reducer Coupling

S x S

PVC PART NO. 8100

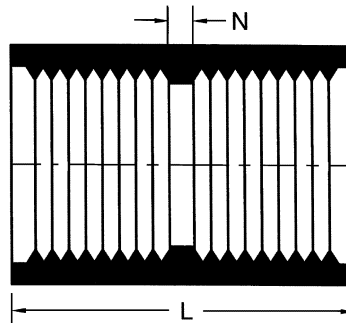


Size	Universal Part Number	L	N	Approx. Wt. (Lbs.)
3/4 x 1/2	829-101	2 ³ / ₁₆	1/4	0.07
1 x 1/2	829-130	2 ³ / ₈	5/16	0.11
1 x 3/4	829-131	2 ⁷ / ₁₆	1/4	0.11
1 1/4 x 1	829-168	2 ³ / ₄	5/16	0.17
1 1/2 x 1	829-211	2 ⁷ / ₈	5/16	0.21
1 1/2 x 1 1/4	829-212	2 ¹⁵ / ₁₆	1/4	0.23
2 x 1	829-249	3 ¹ / ₂	3/8	0.32
2 x 1 1/2	829-251	3 ³ / ₁₆	7/8	0.32
3 x 2	829-338	4 ¹ / ₈	3/4	0.78
4 x 2	829-420	5 ¹ / ₈	1 ⁵ / ₁₆	1.32
4 x 3	829-422	5 ¹ / ₈	1 ⁵ / ₁₆	1.38
6 x 4	829-532	6 ⁵ / ₈	1 ³ / ₈	3.08

Coupling

FPT x FPT

PVC PART NO. 8102

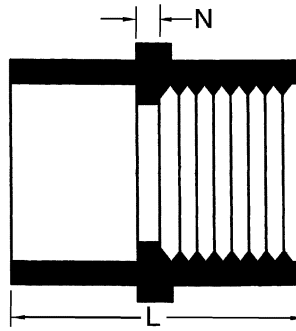


Size	Universal Part Number	L	N	Approx. Wt. (Lbs.)
1/2	830-005	1 ⁵ / ₈	1/8	0.08
3/4	830-007	1 ¹¹ / ₁₆	1/8	0.09
1	830-010	2 ¹ / ₁₆	1/8	0.15
1 1/4	830-012	2 ³ / ₁₆	1/8	0.23
1 1/2	830-015	2 ¹ / ₄	3/16	0.28
2	830-020	2 ⁵ / ₁₆	3/16	0.36
2 1/2	830-025	3 ⁵ / ₁₆	3/16	0.80
3	830-030	3 ¹ / ₂	1/8	1.09
4	830-040	3 ⁵ / ₈	1/8	1.61

Female Adapter

S x FPT

PVC PART NO. 8101

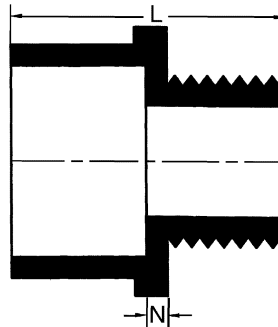


Size	Universal Part Number	L	N	Approx. Wt. (Lbs.)
1/2	835-005	1 ²⁵ / ₃₂	3/32	0.07
3/4	835-007	1 ¹⁵ / ₁₆	3/32	0.10
1	835-010	2 ⁹ / ₃₂	3/32	0.16
1 1/4	835-012	2 ³ / ₈	1/8	0.22
1 1/2	835-015	2 ⁹ / ₁₆	1/8	0.27
2	835-020	2 ²³ / ₃₂	3/32	0.39
2 1/2	835-025	3 ¹⁹ / ₃₂	7/32	0.72
3	835-030	3 ³ / ₄	7/32	0.96
4	835-040	4 ¹ / ₄	1/4	1.52

Male Adapter

S x MPT

PVC PART NO. 8109

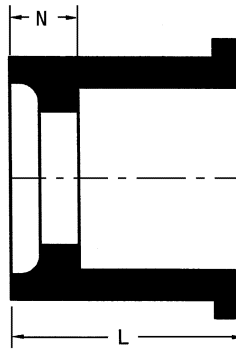


Size	Universal Part Number	L	N	Approx. Wt. (Lbs.)
1/2	836-005	1 ¹³ / ₁₆	3/16	0.05
3/4	836-007	2 ³ / ₈	1/4	0.06
1	836-010	2	3/16	0.10
1 1/4	836-012	2 ¹ / ₂	1/4	0.15
1 1/2	836-015	2 ⁵ / ₈	1/4	0.19
2	836-020	2 ⁷ / ₈	9/32	0.27
2 1/2	836-025	3 ¹¹ / ₁₆	1 ¹ / ₃₂	0.50
3	836-030	3 ⁷ / ₈	3/8	0.73
4	836-040	4 ¹ / ₂	7/16	1.35

Reducer Bushing, Flush Style

SPG x S

PVC PART NO. 8107



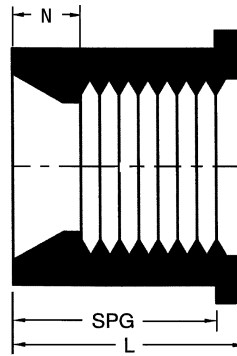
SCHEDULE 80 FITTINGS

Size	Universal Part Number	L	N	Approx. Wt. (Lbs.)
3/4 X 1/2	837-101	1 ⁹ / ₃₂	1 ³ / ₃₂	0.02
1 X 1/2	837-130	1 ¹³ / ₃₂	1 ⁷ / ₃₂	0.07
1 X 3/4	837-131	1 ¹³ / ₃₂	1 ³ / ₃₂	0.04
1 1/4 X 1/2	837-166	1 1/2	5/8	0.11
1 1/4 X 3/4	837-167	1 1/2	1/2	0.11
1 1/4 X 1	837-168	1 ¹⁹ / ₃₂	1 ⁵ / ₃₂	0.08
1 1/2 X 1/2	837-209	1 ²³ / ₃₂	2 ⁷ / ₃₂	0.15
1 1/2 X 3/4	837-210	1 ²³ / ₃₂	2 ³ / ₃₂	0.20
1 1/2 X 1	837-211	1 ²³ / ₃₂	1 ⁹ / ₃₂	0.14
1 1/2 X 1 1/4	837-212	1 ²³ / ₃₂	1 ⁵ / ₃₂	0.08
2 X 1/2	837-247	1 ⁷ / ₈	1	0.21
2 X 3/4	837-248	1 ⁷ / ₈	7/8	0.22
2 X 1	837-249	1 ⁷ / ₈	3/4	0.24
2 X 1 1/4	837-250	1 ⁷ / ₈	5/8	0.24
2 X 1 1/2	837-251	1 ²⁹ / ₃₂	1 ⁷ / ₃₂	0.17
2 1/2 X 1	837-289	2 ⁵ / ₃₂	1	0.46
2 1/2 X 1 1/4	837-290	2 ⁵ / ₃₂	2 ⁹ / ₃₂	0.48
2 1/2 X 1 1/2	837-291	2 ⁵ / ₃₂	2 ⁵ / ₃₂	0.39
2 1/2 X 2	837-292	2 ⁵ / ₃₂	2 ¹ / ₃₂	0.28
3 X 1	837-335	2 1/4	1 1/8	0.67
3 X 1 1/4	837-336	2 1/4	1	0.66
3 X 1 1/2	837-337	2 1/4	7/8	0.64
3 X 2	837-338	2 1/4	3/4	0.59
3 X 2 1/2	837-339	2 1/4	1/2	0.42
4 X 2	837-420	2 ²⁵ / ₃₂	9/32	1.10
4 X 3	837-422	2 ²⁵ / ₃₂	2 ⁹ / ₃₂	0.76
6 X 3	837-530	3 ¹⁷ / ₃₂	1 ¹¹ / ₃₂	2.60
6 X 4	837-532	3 ¹⁷ / ₃₂	1 ⁹ / ₃₂	2.50
8 X 6	837-585	4 ¹⁵ / ₁₆	1 ⁷ / ₈	5.52

Reducer Bushing, Flush Style

SPG x FPT

PVC PART NO. 8108

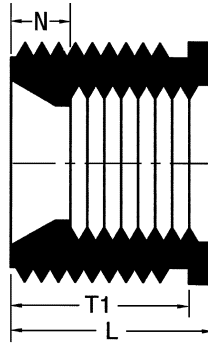


Size	Universal Part Number	L	SPG	N	Approx. Wt. (Lbs.)
3/4 X 1/2	838-101	1 1/4	1 1/32	1/2	0.03
1 X 1/2	838-130	1 7/16	1 5/32	1 1/16	0.06
1 X 3/4	838-131	1 3/8	1 5/32	1 9/32	0.04
1 1/4 X 1	838-168	1 9/16	1 9/32	9/16	0.09
1 1/2 X 3/4	838-210	1 3/4	1 13/32	1 9/32	0.16
1 1/2 X 1	838-211	1 3/4	1 13/32	1 1/32	0.15
1 1/2 X 1 1/4	838-212	1 21/32	1 13/32	2 1/32	0.10
2 X 3/4	838-248	1 7/8	1 17/32	1 3/32	0.23
2 X 1	838-249	1 7/8	1 17/32	2 7/32	0.28
2 X 1 1/4	838-250	1 29/32	1 17/32	1 3/32	0.24
2 X 1 1/2	838-251	1 29/32	1 17/32	7/8	0.19
2 1/2 X 1 1/2	838-291	2 3/16	1 25/32	1 5/32	0.43
2 1/2 X 2	838-292	2 3/16	1 25/32	1 5/32	0.31
3 X 2	838-338	2 9/32	1 29/32	1 7/32	0.64
3 X 2 1/2	838-339	2 9/32	1 29/32	2 7/32	0.49
4 X 2	838-420	2 1 1/16	2 5/16	1 1 1/16	1.11
4 X 3	838-422	2 1 1/16	2 5/16	1 1 1/16	0.86

Reducer Bushing, Flush Style

MPT x FPT

PVC PART NO. 8200

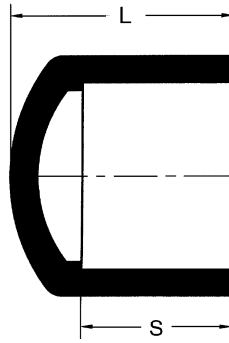


Size	Universal Part Number	L	N	T1	Approx. Wt. (Lbs.)
3/4 x 1/2	839-101	1	9/32	3/4	0.02
1 x 1/2	839-130	1 1/4	17/32	3/4	0.05
1 x 3/4	839-131	1 1/4	9/32	3/4	0.04
1 1/4 x 1	839-168	1 5/16	5/16	1	0.06
1 1/2 x 1	839-211	1 3/8	5/16	1	0.11
1 1/2 x 1 1/4	839-212	1 3/8	5/16	1	0.07
2 x 1	839-249	1 7/16	5/16	1	0.19
2 x 1 1/2	839-251	1 7/16	5/16	1	0.13
2 1/2 x 2	839-292	1 15/16	3/8	1	0.24
3 x 2	839-338	2	3/8	1	0.51
3 x 2 1/2	839-339	2	7/16	1 5/8	0.38
4 x 2	839-420	2 1/16	3/8	2 5/16	0.99

SCHEDULE 80 FITTINGS

**Cap
S**

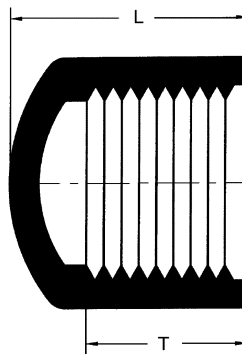
PVC PART NO. 8116



Size	Universal Part Number	S	L	Approx. Wt. (Lbs.)
1/2	847-005	7/8	1 ³ / ₈	0.04
3/4	847-007	1	1 ¹⁵ / ₃₂	0.06
1	847-010	1 ¹ / ₈	1 ⁵ / ₈	0.09
1 ¹ / ₄	847-012	1 ¹ / ₄	1 ¹³ / ₁₆	0.15
1 ¹ / ₂	847-015	1 ³ / ₈	2	0.18
2	847-020	1 ¹ / ₂	2 ⁵ / ₃₂	0.28
2 ¹ / ₂	847-025	1 ³ / ₄	2 ¹⁹ / ₃₂	0.51
3	847-030	1 ⁷ / ₈	2 ¹³ / ₁₆	0.72
4	847-040	2 ¹ / ₄	3 ⁵ / ₁₆	1.20
6	847-060	3	4 ¹¹ / ₁₆	3.10
8	847-080	4	6 ⁷ / ₁₆	6.11

**Cap
FPT**

PVC PART NO. 8117

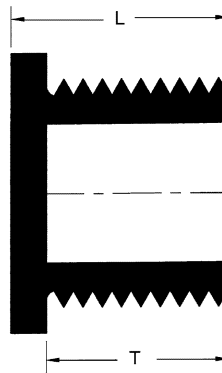


Size	Universal Part Number	T	L	Approx. Wt. (Lbs.)
1/2	848-005	3/4	1 ¹ / ₃₂	0.05
3/4	848-007	7/8	1 ⁷ / ₃₂	0.06
1	848-010	1	1 ³ / ₈	0.11
1 ¹ / ₄	848-012	1	1 ¹⁷ / ₃₂	0.15
1 ¹ / ₂	848-015	1 ¹ / ₃₂	1 ⁵ / ₈	0.19
2	848-020	1 ¹ / ₃₂	1 ¹³ / ₁₆	0.29
2 ¹ / ₂	848-025	1 ⁵ / ₁₆	2 ¹⁵ / ₃₂	0.54
3	848-030	1 ⁷ / ₁₆	2 ²³ / ₃₂	0.80
4	848-040	1 ¹ / ₂	3	1.30

Plug

MPT

PVC PART NO. 8113

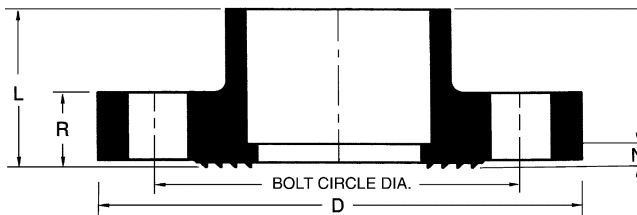


Size	Universal Part Number	L	T	Approx. Wt. (Lbs.)
1/2	850-005	15/16	3/4	0.02
3/4	850-007	1	3/4	0.03
1	850-010	1 1/4	1	0.05
1 1/4	850-012	1 5/16	1	0.07
1 1/2	850-015	1 5/16	1	0.10
2	850-020	1 1/2	1 1/16	0.18

Flange, One Piece**

S

PVC PART NO. 8500



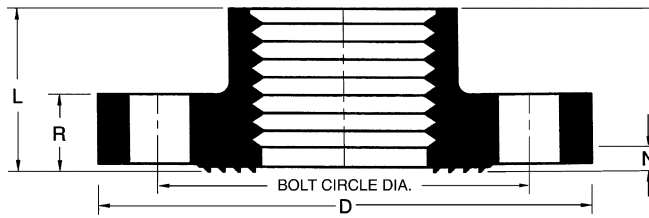
Size	Universal Part Number	D	L	N	R
1/2	851-005	3 1/2	1 1/8	7/32	9/16
3/4	851-007	3 7/8	1 3/16	3/16	9/16
1	851-010	4 1/4	1 5/16	3/16	5/8
1 1/4	851-012	4 19/32	1 7/16	3/16	1 1/16

Size	BOLT CIRCLE DIA.	BOLT HOLE DIA.	NO. OF BOLT HOLES	BOLT DIA.	MIN. BOLT LENGTH*	Approx. Wt. (Lbs.)
1/2	2 3/8	5/8	4	1/2	2 1/4	0.18
3/4	2 3/4	5/8	4	1/2	2 1/4	0.25
1	3 1/8	5/8	4	1/2	2 1/4	0.33
1 1/4	3 1/2	5/8	4	1/2	2 1/2	0.43

* BOLT LENGTHS WERE CALCULATED USING TWO CHARLOTTE FLANGES. LENGTHS MAY VARY WHEN MATING WITH OTHER BRANDS OR ACCESSORIES.

** THE MAXIMUM WORKING PRESSURE IS 150 PSI AT 73°F.

Flange, One Piece**
FPT
PVC PART NO. 8560



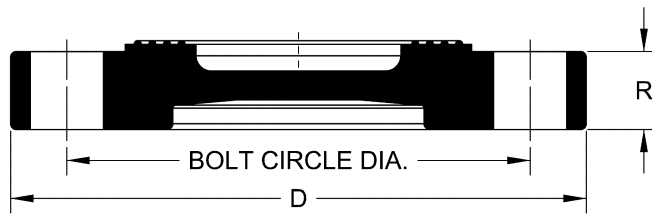
Size	Universal Part Number	D	L	N	R
1/2	852-005	3 1/2	1	1/4	9/16
3/4	852-007	3 7/8	1	3/16	19/32
1	852-010	4 1/4	1 1/8	1/8	21/32
1 1/4	852-012	4 19/32	1 7/32	7/32	23/32
1 1/2	852-015	5	1 1/4	1/4	13/16
2	852-020	6	1 3/4	3/8	13/16

Size	BOLT CIRCLE DIA.	BOLT HOLE DIA.	NO. OF BOLT HOLES	BOLT DIA.	MIN. BOLT LENGTH*	Approx. Wt. (Lbs.)
1/2	2 3/8	5/8	4	1/2	2 1/4	0.19
3/4	2 3/4	5/8	4	1/2	2 1/4	0.25
1	3 1/8	5/8	4	1/2	2 1/4	0.33
1 1/4	3 1/2	5/8	4	1/2	2 1/2	0.44
1 1/2	3 7/8	5/8	4	1/2	2 1/2	0.57
2	4 3/4	3/4	4	5/8	3	0.92

* BOLT LENGTHS WERE CALCULATED USING TWO CHARLOTTE FLANGES. LENGTHS MAY VARY WHEN MATING WITH OTHER BRANDS OR ACCESSORIES.
** THE MAXIMUM WORKING PRESSURE IS 150 PSI AT 73°F.

Blind Flange, One Piece**

PVC PART NO. 8510



Size	Universal Part Number	D	R	BOLT CIRCLE DIA.	BOLT HOLE DIA.	NO. OF BOLT HOLES	BOLT DIA.	MIN. BOLT LENGTH*	Approx. Wt. (Lbs.)
2	853-020	5 ⁷ / ₈	1 ³ / ₁₆	4 ³ / ₄	3/4	4	5/8	3	0.84
3	853-030	7 ⁷ / ₁₆	2 ⁹ / ₃₂	6	3/4	4	5/8	3 ³ / ₄	1.58
4	853-040	9 ¹ / ₃₂	1 ¹ / ₁₆	7 ¹ / ₂	3/4	8	5/8	3 ¹ / ₂	2.50
8	853-080	13 ¹ / ₂	1 ¹⁵ / ₃₂	11 ²³ / ₃₂	1 ⁵ / ₁₆	8	3/4	4 ¹ / ₂	7.83

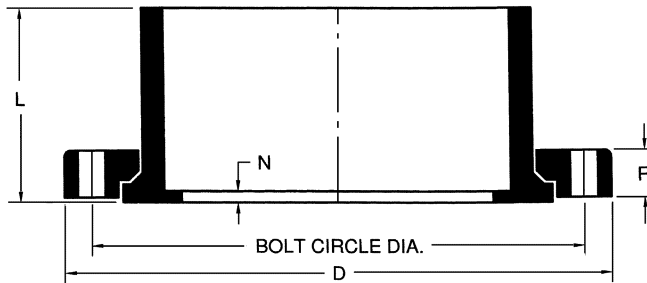
* BOLT LENGTHS WERE CALCULATED USING TWO CHARLOTTE FLANGES. LENGTHS MAY VARY WHEN MATING WITH OTHER BRANDS OR ACCESSORIES.
 ** THE MAXIMUM WORKING PRESSURE IS 150 PSI AT 73°F.

SCHEDULE 80 FITTINGS

Van Stone Flange**

S

PVC PART NO. 8530



Size	Universal Part Number	D	L	N	R
1½	854-015	4 ¹⁵ / ₁₆	1 ⁹ / ₁₆	3/ ₃₂	2 ³ / ₃₂
2	854-020	5 ⁷ / ₈	1 ²³ / ₃₂	3/ ₃₂	1 ³ / ₁₆
2½	854-025	6 ¹¹ / ₁₆	1 ³¹ / ₃₂	1/ ₈	2 ⁹ / ₃₂
3	854-030	7 ⁷ / ₁₆	2 ¹ / ₈	1/ ₈	2 ⁹ / ₃₂
4	854-040	9 ¹ / ₃₂	2 ⁵ / ₈	1/ ₈	1 ¹ / ₁₆
6	854-060	10 ³¹ / ₃₂	3 ⁷ / ₃₂	1/ ₈	1 ⁷ / ₃₂
8	854-080	13 ¹¹ / ₃₂	4 ⁵ / ₁₆	3/ ₁₆	1 ¹ / ₂
10	854-100	16	5 ¹¹ / ₁₆	5/ ₈	1 ¹¹ / ₁₆
12	854-120	19	7 ⁵ / ₁₆	9/ ₁₆	1 ¹¹ / ₁₆

Size	BOLT CIRCLE DIA.	BOLT HOLE DIA.	NO. OF BOLT HOLES	BOLT DIA.	MIN. BOLT LENGTH*	Approx. Wt. (Lbs.)
1½	3 ⁷ / ₈	5/ ₈	4	1/ ₂	2½	0.54
2	4 ³ / ₄	3/ ₄	4	5/ ₈	3	0.84
2½	5½	3/ ₄	4	5/ ₈	3¼	1.27
3	6 ⁵ / ₈	3/ ₄	4	5/ ₈	3¼	1.55
4	7½	3/ ₄	8	5/ ₈	3½	2.71
6	9½	3 ¹ / ₃₂	8	3/ ₄	4	3.88
8	11 ³ / ₄	2 ⁹ / ₃₂	8	3/ ₄	4½	7.21
10	14¼	1	12	7/ ₈	5	12.59
12	17	1	12	7/ ₈	5	20.74

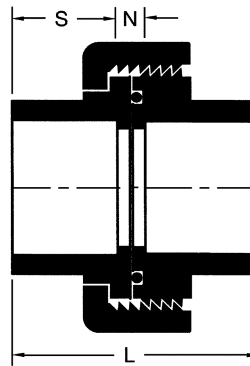
* BOLT LENGTHS WERE CALCULATED USING TWO CHARLOTTE FLANGES. LENGTHS MAY VARY WHEN MATING WITH OTHER BRANDS OR ACCESSORIES.

** THE MAXIMUM WORKING PRESSURE IS 150 PSI AT 73°F.

Union, with Viton® O-Ring Seal*

S

PVC PART NO. 8700



Union, with EPDM O-Ring Seal*

S

PVC PART NO. 8710

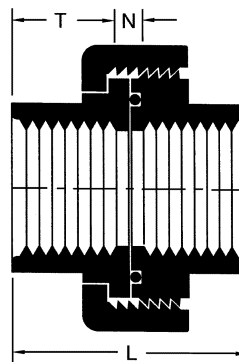
Size	Universal Part Number		L	N	S	Approx. Wt. (Lbs.)
	with Viton O-Ring Seal	with EPDM O-Ring Seal				
1/2	857-005	897-005	2 1/8	5/16	29/32	0.18
3/4	857-007	897-007	2 7/16	7/16	1	0.26
1	857-010	897-010	2 5/8	3/8	1 1/8	0.36
1 1/4	857-012	897-012	2 15/16	7/16	1 1/4	0.52
1 1/2	857-015	897-015	3 3/16	7/16	1 3/8	0.57
2	857-020	897-020	3 21/32	2 1/32	1 1/2	0.90
3	857-030	897-030	5 1/8	1 5/16	1 29/32	2.22

* THE MAXIMUM WORKING PRESSURE IS 235 PSI AT 73°F.

Union, with Viton® O-Ring Seal*

FPT

PVC PART NO. 8800



Union, with EPDM O-Ring Seal*

FPT

PVC PART NO. 8810

Size	Universal Part Number		L	N	T	Approx. Wt. (Lbs.)
	with Viton O-Ring Seal	with EPDM O-Ring Seal				
1/2	858-005	898-005	2 3/16	1/2	1 5/16	0.19
3/4	858-007	898-007	2 13/32	9/16	1 3/32	0.27
1	858-010	898-010	2 5/8	9/16	1 3/32	0.40
1 1/4	858-012	898-012	2 31/32	23/32	1 1/4	0.58
1 1/2	858-015	898-015	3 1/8	23/32	1 11/32	0.67
2**	858-020	898-020	3 5/8	27/32	1 19/32	1.03
3†	858-030	898-030	5 1/8	1 3/4	1 11/16	2.49

* THE MAXIMUM WORKING PRESSURE IS 235 PSI AT 73°F.

** THE MAXIMUM WORKING PRESSURE IS 200 PSI AT 73°F.

† THE MAXIMUM WORKING PRESSURE IS 185 PSI AT 73°F.

Union, with Viton® O-Ring Seal*

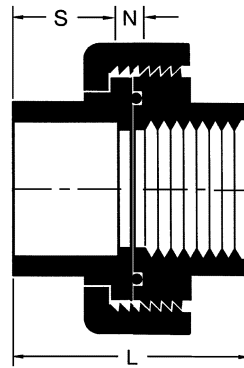
S x FPT

PVC PART NO. 8820

Union, with EPDM O-Ring Seal*

S x FPT

PVC PART NO. 8830



Size	Universal Part Number		L	N	S	Approx. Wt. (Lbs.)
	with Viton O-Ring Seal	with EPDM O-Ring Seal				
1/2	859-005	899-005	2 ¹ / ₈	5/16	1 ⁵ / ₁₆	0.18
3/4	859-007	899-007	2 ⁷ / ₁₆	7/16	1 ³ / ₃₂	0.27
1	859-010	899-010	2 ⁵ / ₈	3/8	1 ³ / ₃₂	0.37
1 ¹ / ₄	859-012	899-012	2 ¹⁵ / ₁₆	7/16	1 ¹ / ₄	0.52
1 ¹ / ₂	859-015	899-015	3 ³ / ₁₆	7/16	1 ¹¹ / ₃₂	0.62
2**	859-020	899-020	3 ²¹ / ₃₂	2 ¹ / ₃₂	1 ¹⁹ / ₃₂	0.98
3†	859-030	899-030	5 ¹ / ₈	1 ⁵ / ₁₆	1 ¹¹ / ₁₆	2.46

* THE MAXIMUM WORKING PRESSURE IS 235 PSI AT 73°F.

** THE MAXIMUM WORKING PRESSURE IS 200 PSI AT 73°F.

† THE MAXIMUM WORKING PRESSURE IS 185 PSI AT 73°F.